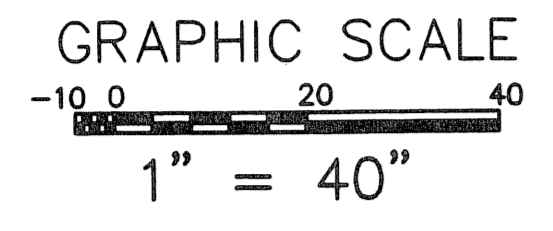
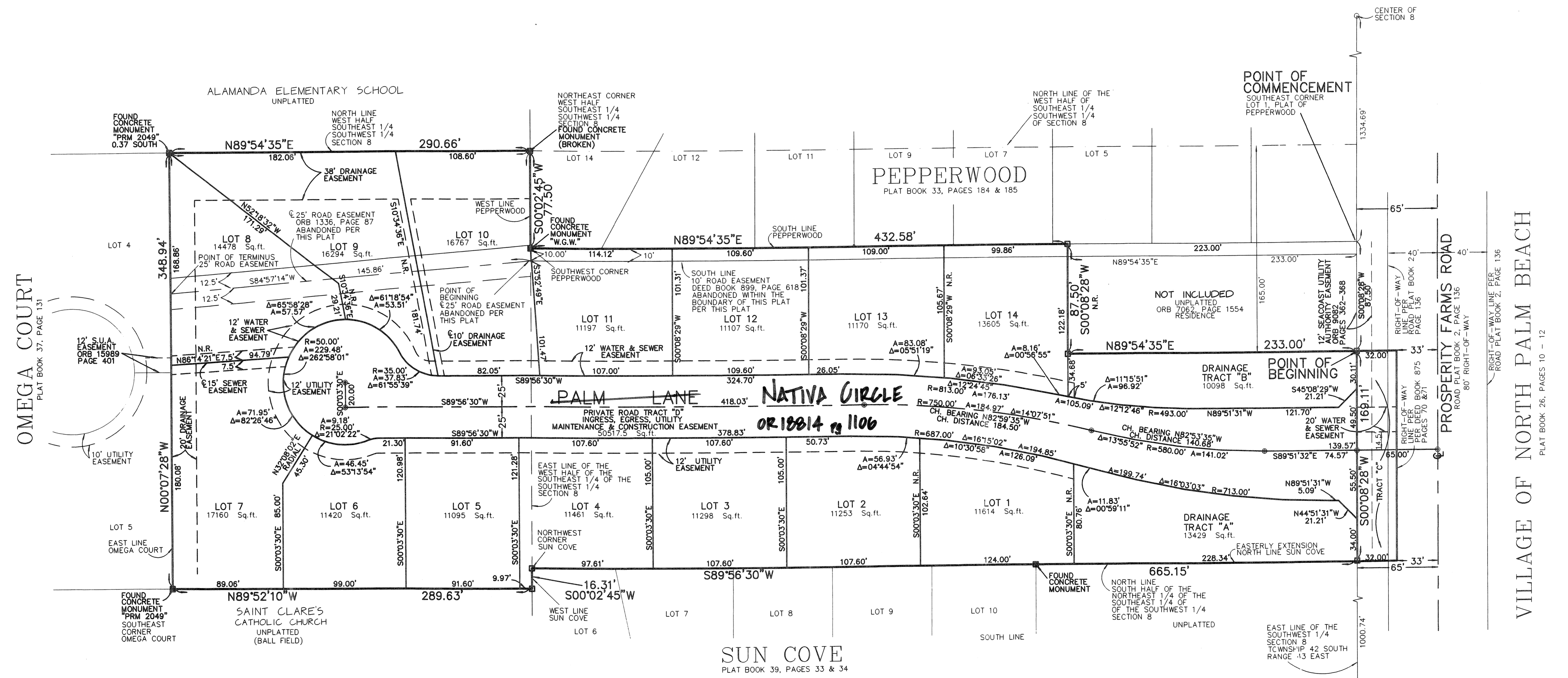


PLAT OF NATIVA A SUBDIVISION OF A PORTION OF THE SOUTH HALF OF SECTION 8, TOWNSHIP 42 SOUTH, RANGE 43 EAST VILLAGE OF NORTH PALM BEACH PALM BEACH COUNTY, FLORIDA



NOVEMBER 2004

SHEET 2 OF 2



SURVEYOR'S NOTES

IN THOSE CASES WHERE EASEMENTS OF DIFFERENT TYPES CROSS OR OTHERWISE COINCIDE, DRAINAGE EASEMENTS SHALL HAVE FIRST PRIORITY, UTILITY EASEMENTS SHALL HAVE SECOND PRIORITY, ACCESS EASEMENTS SHALL HAVE THIRD PRIORITY, AND ALL OTHER EASEMENTS SHALL BE SUBORDINATE TO THESE WITH THEIR PRIORITIES BEING DETERMINED BY USE RIGHTS GRANTED.

NOTICE: THIS PLAT, AS RECORDED IN ITS GRAPHIC FORM, IS THE OFFICIAL DEPICTION OF THE SUBDIVIDED LANDS DESCRIBED HEREIN AND WILL IN NO CIRCUMSTANCES BE SUPPLANTED IN AUTHORITY BY ANY OTHER GRAPHIC OR DIGITAL FORM OF THE PLAT, THERE MAY BE ADDITIONAL RESTRICTIONS THAT ARE NOT RECORDED ON THIS PLAT THAT MAY BE FOUND IN THE PUBLIC RECORDS OF THIS COUNTY.

BEARING BASE: THE EAST LINE OF THE SOUTHWEST 1/4 OF SECTION 8, TOWNSHIP 42 SOUTH, RANGE 43 EAST IS TAKEN TO BEAR S00°08'28"W AND ALL OTHER BEARINGS ARE RELATIVE THERETO.

LEGEND

- Centerline, Radius, Arc Length, Delta, Found Monument, Set Monument, S.U.A., O.R.B., Not Radial, Square Feet, Chord

THIS INSTRUMENT WAS PREPARED BY RONALD E. STOTLER FLORIDA SURVEY & MAPPER #5026 IN THE OFFICE OF DEARLOVE AND ASSOCIATES 450 SOUTH OLD DIXIE HIGHWAY JUPITER, FLORIDA, 33458

Dearlove & Associates LAND SURVEYORS LICENSED BUSINESS - 6944 450 S. OLD DIXIE HWY. JUPITER, FLORIDA 33458 561-746-9745 FAX 561-746-9632

VILLAGE OF NORTH PALM BEACH

PLAT BOOK 26, PAGES 10 - 12

REF: 03-140